

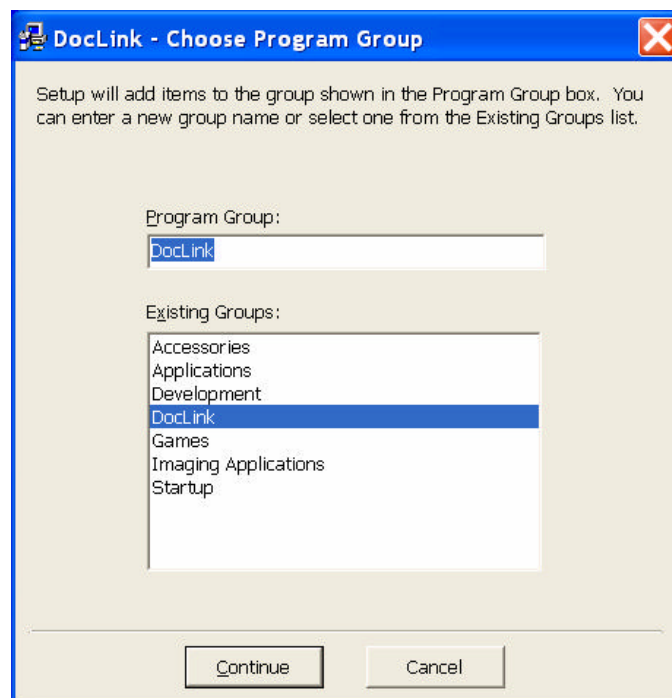
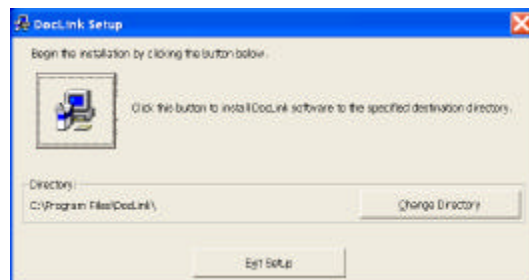
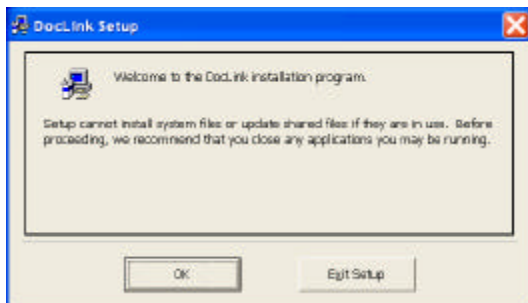
# DocLink User's Guide

## Overview: What is DocLink?

DocLink is a companion utility to the Aquarius Document Management System which effectively 'image-enables' existing database applications by seamlessly linking them with the Aquarius imaging system. As an example, a bank teller might bring up a customer's record in their banking software, and use 'DocLink' to instantly retrieve an image of the customer's signature card.

## Installation:

To Install DocLink, double click 'setup.exe' located on the installation disk. The installation process allows the program path and program group to be customized, although the default settings will suffice for most users. Installation usually takes less than 1 minute.



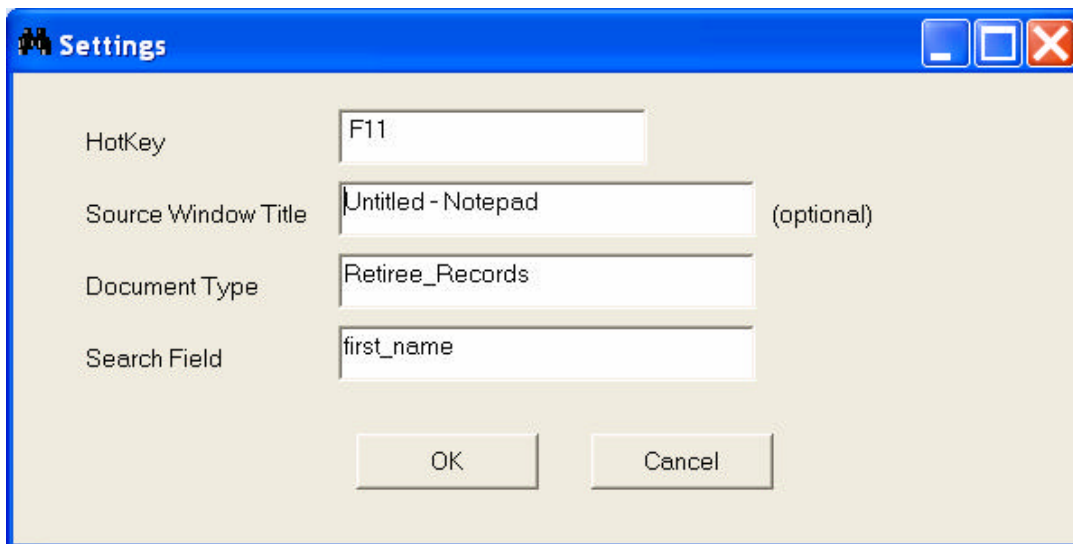
## Launching DocLink:

To launch DocLink, click START / Programs / DocLink, and click the DocLink icon. When the application is launched for the first time, it will show the settings screen to allow you to configure it. Once the configuration is set, DocLink will be memory resident and can be accessed through the system tray.

To close DocLink, right-click on the DocLink icon in the system tray, and click 'Exit.'

## Configuration

To Access the settings for DocLink, right click on the DocLink icon in the system tray, and select Settings. The following screen will appear:

The image shows a Windows-style dialog box titled "Settings" with a blue title bar and standard minimize, maximize, and close buttons. The dialog has a light beige background. It contains four labeled text input fields: "HotKey" with "F11", "Source Window Title" with "Untitled - Notepad" and "(optional)" to its right, "Document Type" with "Retiree\_Records", and "Search Field" with "first\_name". At the bottom are "OK" and "Cancel" buttons.

**Hotkey:** This is the key that will be used to launch the query in Aquarius. To set the hotkey, click into the Hotkey text box, and press the key you want to use. DocLink supports the use of Shift, Alternate, and Control in conjunction with hotkey selection.

**Source Window Title:** This is an optional setting which allows the user to specify which application to capture the search value from. If set, DocLink will capture the search value from wherever the cursor is in the specified application when the hotkey is pressed. If blank, DocLink will capture the search value from wherever the mouse is in any application when the hotkey is pressed.

\*Note: The source window title must match exactly the beginning of the window title, although it does not need to be complete window title.

**Document Type:** This is the document type within Aquarius to search. This setting is case sensitive, and must match exactly the name of the document type within Aquarius.

**Search Field:** This is the field to search with the ‘grabbed’ data. This setting is also case sensitive and must match exactly the name of the field in Aquarius.

Click OK to exit, saving your changes.